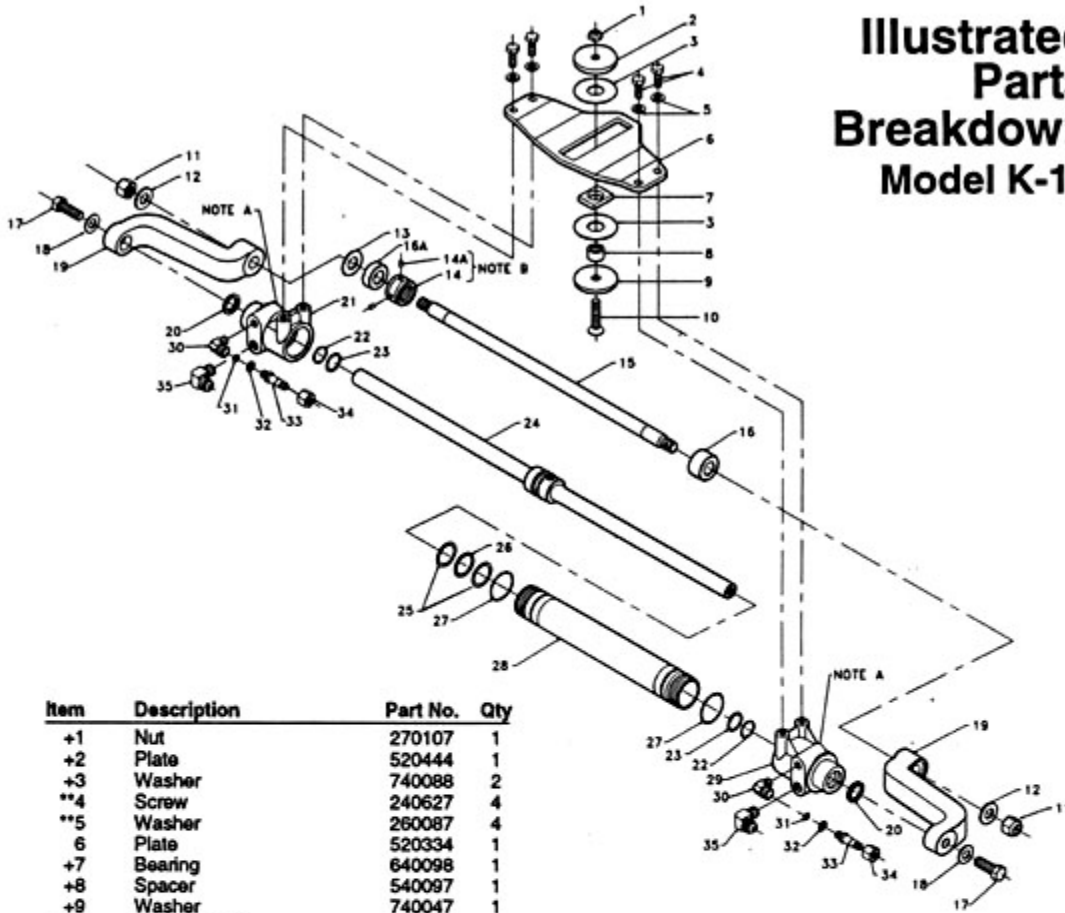


# Illustrated Parts Breakdown Model K-10



Item	Description	Part No.	Qty
+1	Nut	270107	1
+2	Plate	520444	1
+3	Washer	740088	2
**4	Screw	240627	4
**5	Washer	260087	4
6	Plate	520334	1
+7	Bearing	640098	1
+8	Spacer	540097	1
+9	Washer	740047	1
+10	Screw(Short)	240687	1
+10	Screw(Long)	240757	1
++11	Elastic Stop Nut	270067	2
++12	Washer	260047	2
++13	Washer	740098	1
++14	Lock Nut	340084	1
++14A	Socket Set Screw	240587	2
15	Tilt Tube	420057	1
++16	Spacer	540068	1
++17	Screw	240617	2
++18	Washer	260097	2
19	Bracket	360614	2
*20	Wiper Ring	700088	2
21	Cylinder End Left	560090	1
*22	Backup Ring	252116	2
*23	O-Ring	211116	2

Item	Description	Part No.	Qty
24	Shaft Assembly	550400	1
*25	Backup Ring	252214	2
*26	O-Ring	211214	1
*27	O-Ring	211028	2
28	Cylinder Tube	500104	1
29	Cylinder End Right	560100	1
30	Fitting	691271	2
31	O-Ring	211010	2
32	O-Ring	211109	2
33	Bleed Fitting	691191	2
34	Nut	691261	2
35	Fitting	690051	2

- \* Incorporated in Hynautic Seal Kit KS-07
- \*\* Incorporated in 860041-3 Parts Bag
- + Incorporated in 860039-1 Parts Bag
- ++ Incorporated in 860039-2 Parts Bag

NOTE A: Loctite 680 is used in the assembly of the cylinder at the time of manufacturing at Hynautic.

NOTE B: When ordering Item No. 14 (Lock Nut) be sure to order Item No. 14A (Socket Set Screw) too, as these items are not packaged together.



Marine Systems and Products - 1579 Barber Road, Sarasota, FL 34240 Tel. 941-379-0500 FAX 941-379-0496

